

PROFESSIONAL DIVERS GROUP PTY LTD



Issue No. 2

July 2017

Providing safe, efficient and professional commercial diving solutions.



In This Issue

McKay Power Station Head Race Tunnel Works

Origin Energy Fire Water Storage Pond Maintenance

Lake Eildon Debris Removal

Contaminated Environment Diving Projects

Port of Melbourne ALWC Project

Mildura Wharf Surveys

Diving in Coober Pedy, Central Australia

PDS Improves its ROV Capabilities

Professional Diving Services improves its survey and inspection capabilities with a new ROV which has a 100m depth capability and 300m tether range and ideally suited for structure inspections, tank inspections, vessel surveys and for monitoring underwater works.



Professional Divers Group has had a strong 2016/2017 year and finished its 35th year of operation with a number of diverse and challenging projects which were executed above all expectations. PDG in March published its Diving Operations Manual 2017 which has been updated and continues to meet and exceed not only Australian but also International guidance and best practice which cements PDG as an industry leader in occupational diving.



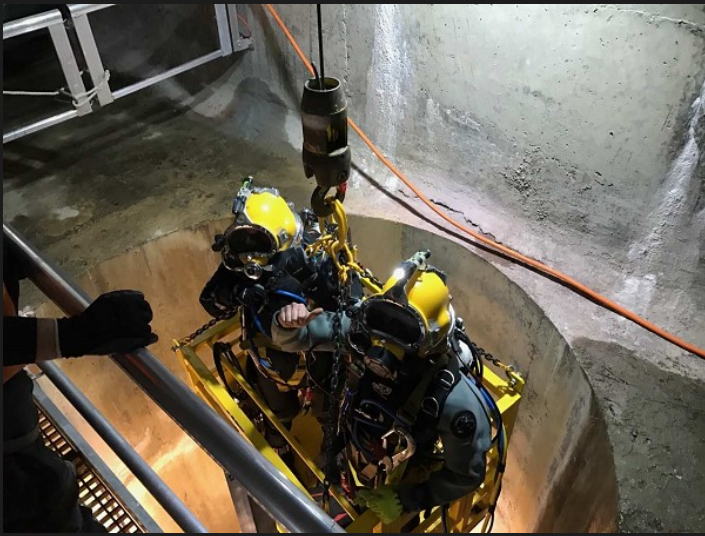
Frank Zeigler

Changes in our staffing structure has seen us focus more on personnel skills which add value to our works and ultimately to the project and client. PDG has engaged two additional marine scientists, a draftsman and an ROV pilot. In addition PDG moves towards finalising designs for construction of its new diving support vessel.

The remainder of 2017 sees the commencement of major projects at Western Treatment Plant and Docklands Central Pier.

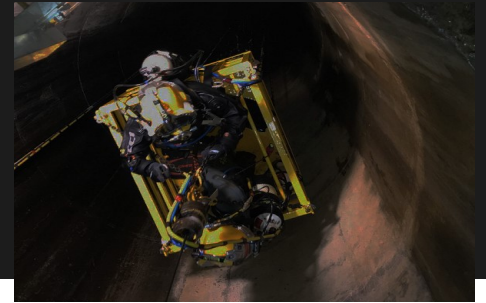


Malcolm Venturoni



McKay Power Station Head Race Tunnel Works

Professional Diving Services worked with AGL at the McKay power station, VIC, completing commercial diving works within the inlet tunnel to the power station located down a 85m vertical shaft. These works were completed at an altitude of 1600m at the top of Mount McKay above Falls Creek and consisted of a 9-man commercial dive crew over a period of several weeks. The dive control was located 60m up a tunnel inside the mountain where divers were lowered 85m to the water. Divers then accessed the head race tunnel from the vertical shaft where diving works were undertaken to remove rock and sediment from the tunnel floor.



PDS has the capabilities of running up to ten crews on any given day supplying diving crews, labour hire and vessels.



Origin Energy Fire Water Storage Pond Maintenance

Professional Diving Services supply dive crew and equipment to remove sediments from the fire water storage pond at Origin Energy Port Campbell as part of general maintenance and to ensure water capacity and quality within the storage pond.

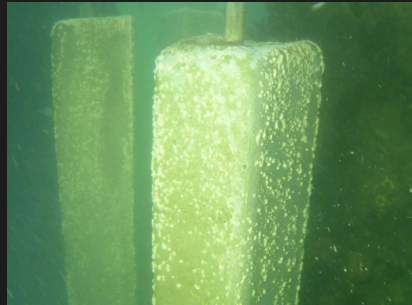
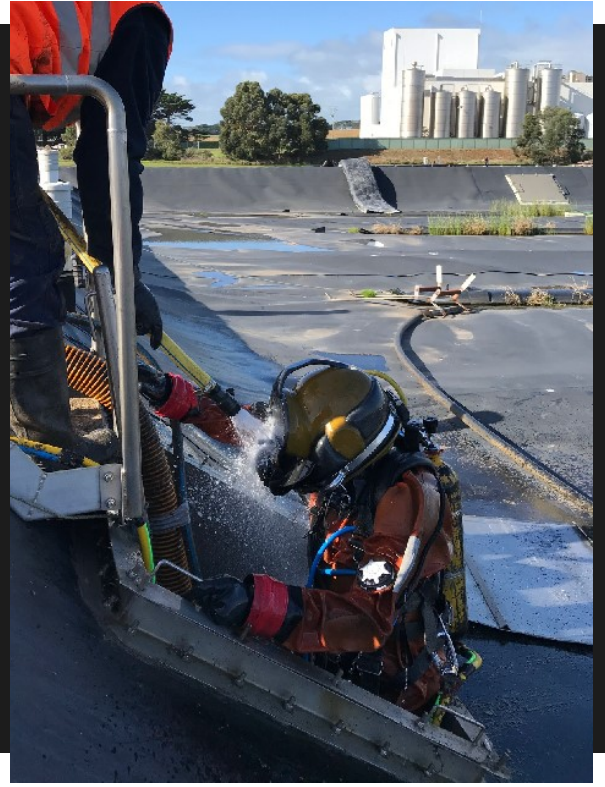
Lake Eildon Debris Removal

Professional Diving Services complete occupational diving works to 50m water depth on the lake Eildon inlet tower. Works consisted of debris removal to allow operators to remove trash racks for routine maintenance. This was one of many deep inland diving projects completed by Professional Diving Services for the water industry.



Contaminated Environment Diving Projects

Professional Diving Services has seen a significant increase in the demand of its services for diving in contaminated environments including ongoing projects at Warrnambool Cheese and Butter Factory in Allansford and Melbourne Water's Eastern and Western Treatment Plants. Significant planning also saw 12 PDS crew on site at ICON Water Canberra for a 12 hour shutdown involving four divers in the water simultaneously for the entire period. Other contaminated diving projects have included Yarra Valley Water at Lilydale, MCG below ground tanks, Oz Minerals Prominent Hill Mine Coober Pedy and Telstra pits in Chapel Street.



Port of Melbourne ALWC project

Professional Diving Services worked with the Port of Melbourne on this \$1M+ project to protect steel piles against Accelerated Low Water Corrosion (ALWC). In the Yarra River from Breakwater to South Wharf, divers installed 416 anodes (over 60 tonnes of material) and various wrapping and encasement systems at six wharves and piers.

PDS has also recently completed other corrosion protection projects at Petrochemical Wharves and Tug Berths installing Impressed Current Cathodic Protection components and Sacrificial Anode based systems.

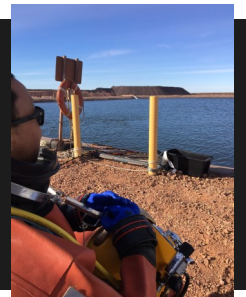
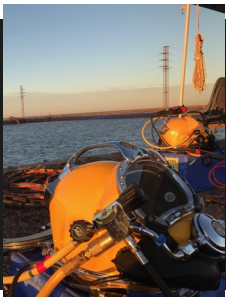
Mildura Wharf Surveys

Professional Diving Services were engaged by Aurecon & The Mildura City Council to complete an underwater survey and condition assessment of the Mildura Wharf and Homestead Wharf located on the Murray River in Mildura, Victoria. A commercial diving crew accompanied by PDS' materials engineer surveyed the 100 piles supporting the Mildura Wharf and the 18 piles supporting the Homestead Wharf taking timber core samples from the piles at each site to identify the structural integrity of the piles.



Diving in Coober Pedy, Central Australia

This year has seen Professional Diving Services complete projects from Northern Queensland, throughout all parts of New South Wales and Victoria to Central South Australia. A recent project took PDS divers to one of Australia's largest copper and gold mines in Coober Pedy, SA to undertake dam maintenance repairs.



Professional Divers Training Academy



Professional Divers Training Academy receive ADAS re-accreditation as an occupational Diver and Diving Supervisor Training Facility to 2021 and training figures for 2016 identify that PDTA trained more than 1/3 of the commercial divers and 2/3 of the Diving Supervisors trained in Australia for 2016.



Occupational Diving Consulting

With recent changes to legislation and standards, PDG have been supplying consulting services to diving companies and organisations engaging divers. This has seen an increase in the work where PDS have been writing procedures and operational practices including training and on site auditing. These works have seen PDG engaged by government departments, organisations and diving companies in almost every state of Australia and Overseas including PNG and Vanuatu.

Student Feedback

"Hands-on skills training and real worksite environment"

"Good attitude of staff towards students with different levels of experience"

Good range of dive sites and exercises - Good trainers"

"Great hands on experience, course kept really interesting for its duration, fantastic course"

Quality of equipment and exposure to industry tools and tasks.

Professional Marine Science Services



Professional Marine Science Services welcome Colin Silvey and Merric Northey to the marine science team.

Professional Marine Science Services have continued to supply water quality and data to Aecom and Watersure for the ongoing environmental monitoring of the **Victorian Desalination Plant**.

Professional Marine Science Services' Maritime Archaeologists are also preparing for further works on the **WW2 Japanese Midget Submarine** off Sydney and the **Windsor Bridge archaeological** excavation on the Hawksbury River is due to commence August/September 2017.



Class In-Water inspection certifications

PDS have recently renewed all of its class survey approvals as certified for in-water surveys and vessel repairs with ABS, DNVGL, Bureau Veritas and Lloyd's Register.



Smarter Safer Solutions



Smarter Safer Solutions complete management of permits and confined space access during a recent shutdown at **Lochard Energy**, Port Campbell, Victoria. Professional Divers Group provided seven personnel to the gas plant for 11 days covering permit management and confined space access through this period.

SSS entered an agreement with **Anchorsafe** to offer working safely at heights training to Anchorsafe customers throughout NSW and Victoria.

The Smarter Safer Solutions team has been working extensively with **Warrnambool Cheese and Butter Factory** overseeing the Occupational Health and Safety for the processing plant and construction upgrade which saw the workforce on the site increase to over 1000.

Drafting capabilities

Professional Diving Services improves its survey and inspection capabilities with the appointment of a dedicated draftsman.

