

PROFESSIONAL DIVERS GROUP PTY LTD



Issue No. 1

November 2016

Celebrating 35 years

Providing safe, efficient and professional commercial diving solutions.



In This Issue

- BioPower Installation of bioWAVE Energy System
- Repair Works for the Port of Melbourne Corporation
- Melbourne Water Western Treatment Plant Diffuser Upgrade Works
- Port of Melbourne Corporation Heritage Anchor Relocation
- Goulburn Murray Water Tea Garden Creek Weir Rehabilitation
- Superyacht First Aid Training
- Martha Cove Ecological Survey
- Watersure Environmental Monitoring for the Victorian Desalination Plant Start Up
- BHP Divers Verification of Competency Assessments

From humble beginnings to a diversified diving services provider.

Professional Diving services was founded by Frank Zeigler in 1981, initially running from our Portland office in Western Victoria. Malcolm Venturoni joined the company in 1996 heading up the Melbourne Operations and after years of continual growth, Malcolm became a partner in 2006 and the Professional Divers Group was formed.



Frank Zeigler

Professional Diving Services have played a significant role in a number of major maritime projects including the Victorian Channel Deepening Project, the Victorian Desalination Project, many Port wharf and jetty construction and rehabilitation projects, and the installation of the bioWAVE energy system in Port Fairy, Victoria. The purchase in 2011 of Professional Divers Training Academy expanded the group's training operations and complimented our Health and Safety division, Smarter Safer Solutions, which provides height safety, first aid and confined space training.



Malcolm Venturoni

We hope you enjoy reading our newsletter containing our recent project highlights and activities.



BioPower Installation of bioWAVE Energy System

Professional Diving Services complete the installation of BioPower Systems' 250kW bioWAVE device off the coast near Port Fairy, Victoria. Built by BioPower Systems, the unique bioWAVE device is a 26-metre tall oscillating structure designed to sway back-and-forth beneath the ocean swell, capturing energy from the waves and converting it into electricity that is fed into the grid via an undersea cable. PDS have actively been working with BioPower Systems on the bioWave for almost ten years culminating in the launch of the offshore wave powered generator. Professional

Diving Services worked with BioPower Systems on site selection, cable installation and during the deployment coordinated with Hansa Heavy Lift to deploy the 700ton unit on the seabed in 26m of water.



PDS has the capabilities of running up to ten crews on any given day supplying diving crews, labor hire and vessels.

Repair Works for the Port of Melbourne Corporation

Professional Diving Services was proud to deliver a recent repair project for the Port of Melbourne Corporation. PDS coordinated a team which included grouting expertise, barge and dive crew to complete repair works to the Yarra River Services Protection System. The works were completed during a river closure to commercial vessels. The team of PDS, Concrete Protection and Repair Services and Waterway Constructions were pleased to deliver this complex project on behalf of Port of Melbourne Corporation.



Melbourne Water Western Treatment Plant Diffuser Upgrade works

Professional Diving Services completed six months worth of upgrade works to the diffusers located in the settlement lagoons at Melbourne Water's Western Treatment Plant. PDS will complete further upgrade works during 2017 supplying specialised dive crews and equipment to work in this contaminated diving environment.

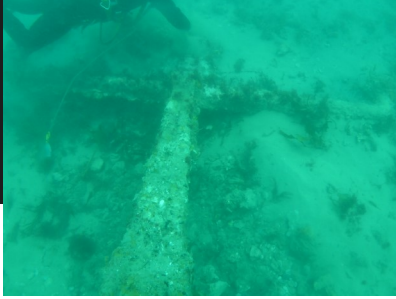




Port of Melbourne Heritage Anchor Relocation

Professional Diving Services inspected an obstruction in the South Channel which was identified to be an old Trotman style anchor. Divers recently relocated the anchor to the Pope's Eye. This is the 14th anchor PDS have relocated to the Pope's eye site for the PoMC with approval from Heritage Victoria.

This was a Trotman style anchor, most probably related to early port infrastructure for channel marking purposes and is approximately 130 years old. The anchor heritage site is now a popular recreational dive destination where divers can see a range of anchors dating back to Victorian settlement.



Tea Garden Creek Weir Refurbishment

Goulburn Murray Water engaged Professional Diving Services to assist with the upgrade and strengthening of the Tea Garden Creek Weir, located near Wangaratta. Professional Diving Services used stainless steel form work and a high strength epoxy resin to reform and strengthen the 60 year old eroded concrete weir. The project significantly extended the weir's life using this innovative method and saved approximately \$1.25 million on a replacement alternative.



Professional Divers Training Academy



"Star of Russia" deep dives as part of ADAS Part 1 SCUBA training in Vanuatu.

PDTA's Melbourne training facility allows for onsite training of commercial divers in its purpose built dive training tank.



During 2016, PDTA conducted 12 commercial diving courses and certified commercial divers through its training facilities in Sydney, Melbourne and Vanuatu.



ADAS occupational dive supervisor course in Sydney.

Dive supervisor simulations and emergency scenario training as part of the

Students completing training dives at the Melbourne Aquarium. Aquarium courses will be conducted internationally throughout 2017.



Superyacht First Aid Training

Professional Divers Training Academy have been completing First Aid, Oxygen Administration and CPR training for several superyacht crews out of Sydney including the vessel MV Quantum (left) and Hey Jude (right).



Professional Marine Science Services

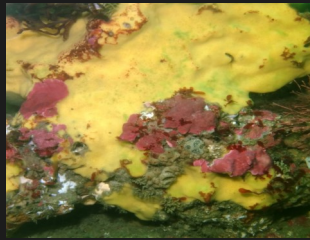
Martha Cove Ecological Survey

Professional Marine Science Services have been completing annual surveys for Martha Cove Marina as part of their ecological monitoring program. The surveys include sampling of marine invertebrates and vegetation cover at eight sites from the marina mouth right through to the inland boundary. The highest diversity of reef fish and sea-life is generally observed near the harbour mouth and road bridge. These surveys form part of a monitoring program that includes scientific diving and bathymetry surveys for water depth monitoring within the marina. These are both completed by Professional Marine Science Services and along with other construction and maintenance works completed by Professional Diving Services.



Watersure Environmental Monitoring for the Victorian Desalination Plant Start Up

Professional Marine Science Services are currently gathering ecological and water quality data as part of the Marine Environmental Monitoring Program for the Victorian Desalination Plant. Professional Marine Science Services ecologists are involved in on site data collection and have constructed a laboratory facility for analysis.



Smarter Safer Solutions

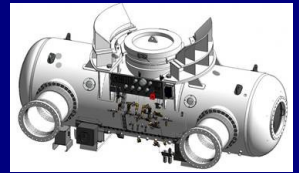
BHP Diver Verification of Competency Assessments

Professional Divers Group CEO Frank Zeigler completed verification of competency assessments of occupational divers and supervisors currently working on project works for BHP in North Western Australia. The verification of competency assessments form part of the specialised OH&S marine consulting work PDG completes for BHP around Australia.



Upgrade of submarine escape rescue system

Professional Divers Group worked with HI Fraser in 2014 on the upgrade and refurbishment of the Australian Navy's Submarine escape rescue system designed to support and safely decompress the entire complement of a distressed submarine.



Professional Divers Group provided design advice, developed operational procedures for the systems use, developed training material and trained the system operators and also proof tested the system on commissioning. The project has since received in 2015 the PACE Zenith project of the year award for oil and gas machine builder and in 2016 was the winner in the Innovation, research and development category at the Australian Engineering Excellence Awards.

Bruno Grollo purchases hyperbaric oxygen therapy chamber from PDS

The chamber and system which will be used for hyperbaric oxygen therapy and research was delivered to Bruno's Templestowe home, installed and tested 'turn key'. PDS also provided training to staff who will be operating the chamber and system.



The chamber has a working pressure of 2.8 ATA, making it the first monoplace chamber of this pressure capability produced of its type in the world. The chamber, electronics, valving and all systems were designed and manufactured by PDG and even includes an entertainment system.

M24 Japanese WWII Submarine

Professional Diving Services have just completed further works on the M24 Japanese WWII midget submarine for the NSW Government Office of Environment and Heritage. The current round of works involved monitoring the corrosion rate of the submarine lost in 1943 and also sediment sampling to determine the presence of the condition of the two explosive charges thought to be still contained in the fore and aft sections of the submarine.



The submarine is located in 50m of water of the northern Sydney beaches.

